

Anglian Water update



Important information about a new pipeline
to improve your water supply

February 2021

Improving your service and supply

We are facing four interlinked challenges to water supplies in East Anglia. These are climate change, environmental protection, population growth and the risk of drought. We want to act now to ensure the long-term availability of water for all customers in the future.

Climate change

The East of England has below average rainfall for the UK. The area is classified as under severe water stress. Climate change projections suggest there will be lower summer rainfall and hotter temperatures.

Environmental protection

We will be taking less water from the environment, such as rivers and boreholes. We aim to reduce the amount we take by 84 million litres a day.

Population growth

Our region is experiencing high levels of population growth with a predicted increase of 20% in our area over the next 25 years. This will create an added demand and pressure on our water resources.

Drought

Since the 2011-2012 drought we have been investing in our network to reduce the impact of water shortages.

Our 25-year Water Resources Management Plan (WRMP) assesses the impacts of these challenges and sets out how we will manage water across our region.

We consulted widely during 2018 and 2019 and have support from our customers and regulators for our plans in the WRMP. This pipeline is an example of the investment we are making in our network, to make best use of our water resources while minimising the impact on the environment.

Improving local water supplies

We will be building up to 500km of new, interconnected pipelines - longer than the track being laid across the country for HS2 - one of the biggest infrastructure programmes for a generation.

The new pipelines will help us move water more freely around the region and divert it from areas of water surplus in north Lincolnshire, to the south and east of the region, where it isn't readily available.

The new pipelines will also strengthen local resilience by reducing the number of homes and businesses which rely on a single water source.

For more information, please visit our new water pipelines web pages [anglianwater.co.uk/spa](https://www.anglianwater.co.uk/spa)





A new water pipeline

A new 70km pipeline, known as the Bexwell to Bury St Edmunds pipeline will connect into our existing water network. The below ground pipeline will run north to south from an existing reservoir at Bexwell to an existing reservoir at Rede, to the south of Bury St Edmunds.

There will be three pipeline spurs which will connect into existing infrastructure at the Isleham and Gazeley water treatment works, and the Woodditton water tower.

In addition to the underground pipeline, we will be constructing new above ground buildings including five pumping stations and three water storage tanks.

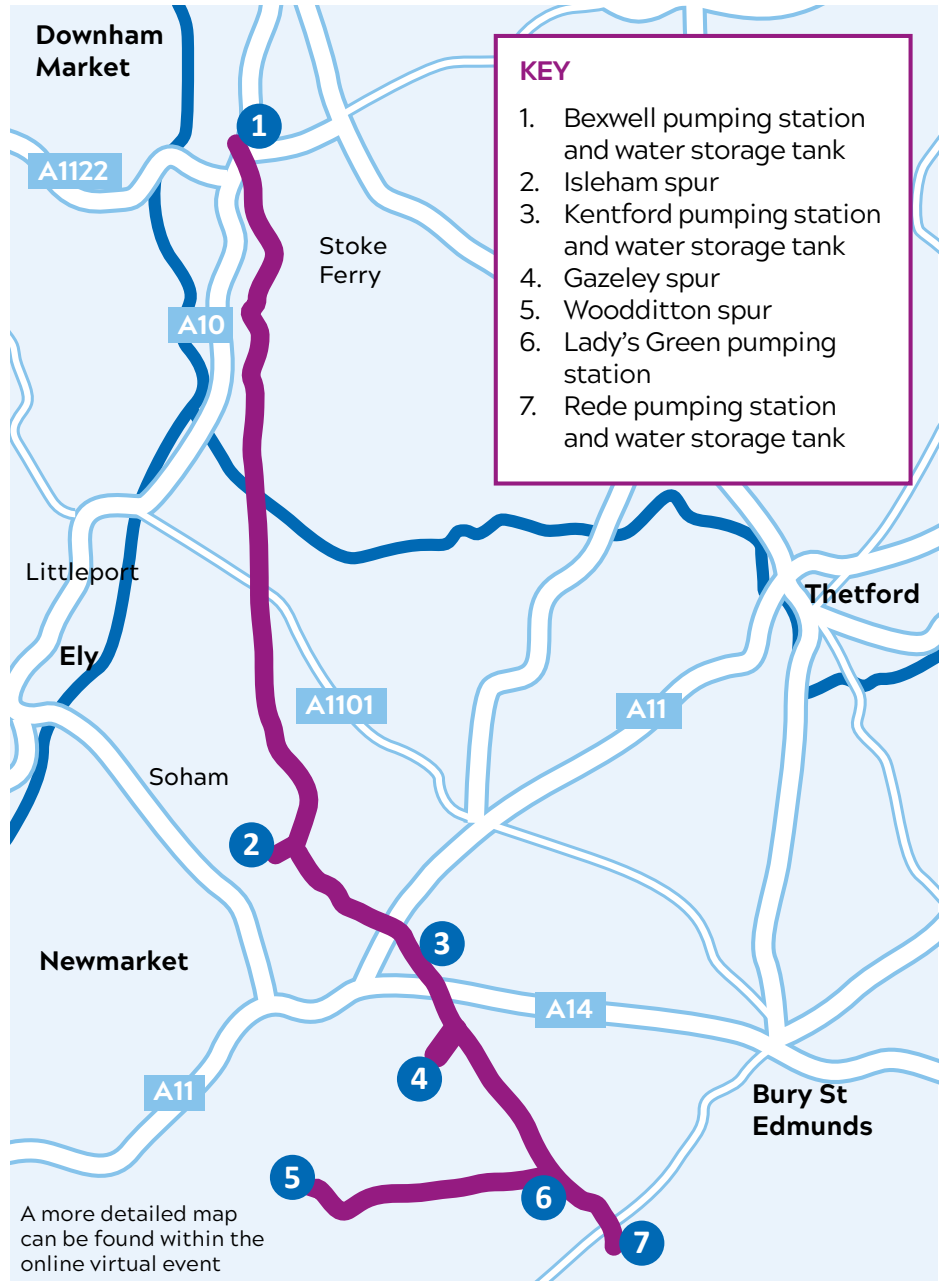
This pipeline will eventually join up with other new pipelines coming from the north and extending further south. These pipelines are at various stages of planning. More information about all the interconnected pipelines can be found on the website - anglianwater.co.uk/spa

The preferred pipeline route

We have been busy working on plans to find the best route for the new 70km pipeline. We've been planning this route for a while. We have listened to customers and stakeholders, including landowners, about their concerns and reviewed findings from environmental and archaeological surveys. As a result, we have made some changes to the original route.

We have also moved the route of the pipeline to avoid sensitive ecological sites, including the Hilgay Fen County Wildlife Site and various other locations where our site surveys found badgers, water voles, bats and great crested newts.

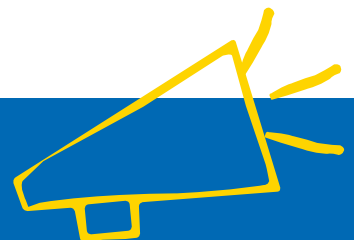
Preferred route for Bexwell to Bury pipeline



We have been in contact with Sunnica Energy Farm who are planning a large-scale solar energy farm in the area. We have carried out surveys and investigations to see whether there are any environmentally sensitive areas such as protected species and archaeology. As a result we have changed the route of the pipeline to avoid areas of archaeological interest to the south-east of Isleham.

We have worked hard to make sure that this new route, our preferred route, minimises the impact on the environment and we will continue to work with local communities and landowners while we finish the design and as we construct the pipeline.

We want your views on the proposed route.



Please visit our website anglianwater.co.uk/spa to visit our virtual event, join in a live chat and leave your views between 22 February and 8 March 2021 and see the feedback survey on the reverse side for more details.

What happens next?

We are currently planning the final design and construction of the pipeline and are working closely with the local planning authorities to agree timetables and arrangements for the submission of our planning application.

We will be continuing our ground investigation activities in 2021 to understand drainage, soil, and land conditions. The information we gather will help us plan access and ways of working.

Our teams undertaking these works will follow the current COVID-19 working guidelines.

Subject to agreement with the planning authorities, we will start pre-construction and enabling works, such as measures to protect wildlife during the construction phase and the limited removal of hedgerows.

The construction start date will be dependent on many factors, including the weather. We are aiming to start work towards the end of 2021 and continue until 2024.



Phase of work	Types of activity	Approximate timetable
Engaging with customers and stakeholders about the preferred route	Sharing the route, listening to feedback	Spring 2021
Environmental investigations	Archaeological surveys and ecological monitoring	Ongoing during 2021
Ground investigations and archaeological trial pits	Digging trenches and boreholes to understand conditions below the surface	Spring 2021
Submission and discussions with local planning authorities	Make submission and discuss any consent that may be required for the scheme	Spring 2021
Enabling works (works needed prior to the start of construction)	Ecological mitigation for legally protected species. Limited vegetation removal to aid access	Autumn / Winter 2021
Construction	Site compounds set-up Cutting open trenches, laying pipes and backfilling (refilling of soil once the pipe has been installed) Trenchless pipelaying (where pipes are pushed through the ground) Construction of pumping stations, water storage tanks Temporary storage lagoons (to store water that will be used to test the pipeline after construction)	2022-2023
Commissioning (testing the pipeline prior to becoming operational)	Cleaning the pipeline and connecting to network	2023-2024
Reinstatement after installation (the land will be reinstated to its original state and where we can with additional improvements in some areas)	Replacement of topsoil Restoration of access routes and fencing Reinstatement of road surfaces Reinstatement of drainage Replacement of vegetation	2024

Impact on communities

Once construction gets under way, we will work hard to keep the impact on communities along the route, and the environment, to a minimum.

Techniques we will use

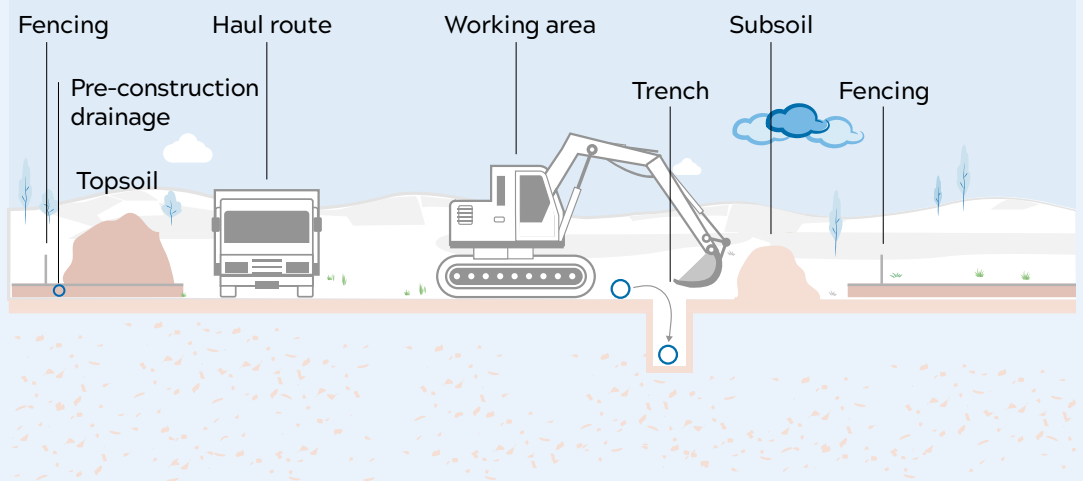
We will install pipes following good industry practice using tried and tested techniques. The most commonly used method to lay pipe is an open cut trench. Where we need to minimise disruption to the surface - such as when we want to cross major roads, rivers, and railway lines - we will use trenchless techniques.

Our working area will be up to 40-metres wide, but will be narrower for crossing sensitive hedgerows, tree lines and watercourses.



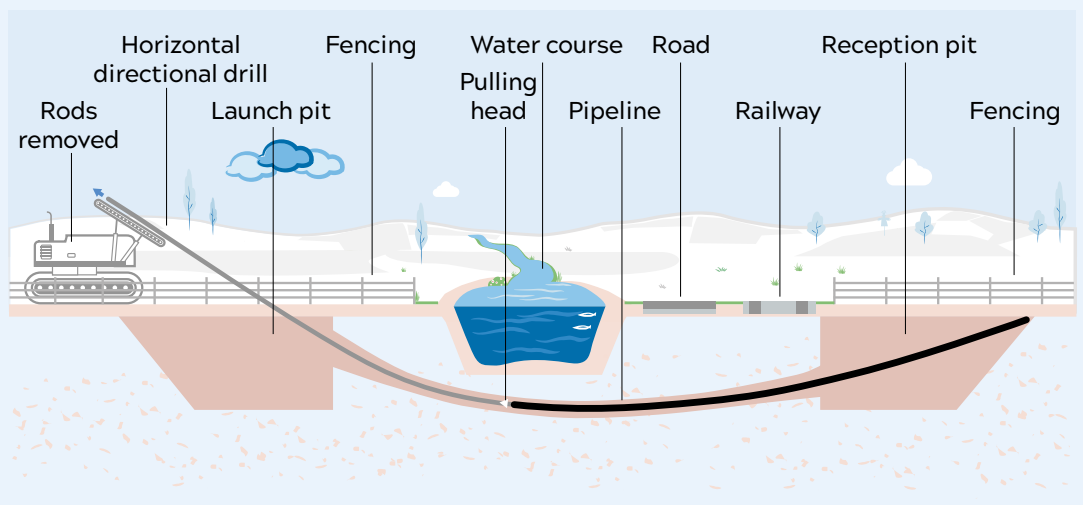
Open cut trenches

Open cut trenching will be used for most of the pipeline route that goes through open ground. This is when a trench is dug by an excavator, the pipe is laid and then covered over.



Trenchless

Trenchless techniques will be used to lay pipes underneath main rivers, railways and roads. This involves directionally drilling or 'auger boring', when a machine will drill or bore a hole through the ground from one side of an obstruction to the other. The pipe is then pushed through the hole.



For more information about our approach please see our website anglianwater.co.uk/spa and leave your comments between 22 February and 8 March 2021.

What do you think?



Bexwell to Bury pipeline feedback survey

Due to COVID-19, we think it is more important than ever to stay connected and find new ways of engaging with you.

We are holding a virtual event from 22 February to 8 March 2021 at anglianwater.co.uk/spa which will have all the information that you would expect to see at a physical event that we would ordinarily hold in a village hall or community centre.

In addition, we have added some pages to our website which have all the information.

We would like to hear from you. Please visit anglianwater.co.uk/spa and give us your feedback in our survey online between 22 February and 8 March 2021.

We understand that some people might not have access to the internet or be able to submit their comments on-line. We would still like to hear from you - you can get in touch in other ways - please see below.

We would like to hear your views

You can reply to the questions below by:



Visiting anglianwater.co.uk/spa or scanning the QR code on the right.



Sending an email to strategicpipelines@anglianwater.co.uk



Posting to Strategic Pipeline Alliance, 3rd Floor World Wide House, Thorpe Wood, Peterborough, Cambridge, PE3 6SB.

All surveys must be received by Monday 15 March 2021 so we can take your views into account before we finalise our plans.

Please tell us about the following:

1. Can you see how this scheme will improve water supplies in the area?

Yes

No

Don't know

2. Is there anything you would like to make us aware of in relation to this scheme?

.....
.....

3. Is there anything you would like more information on?

.....
.....

NB - please provide your contact details below so that we can reply

Contact email address (preferred):

.....

If you don't have an email address, please provide

Postal address:

.....

Telephone:

4. Overall, how do you feel about this pipeline?

On a scale of 1-10 with 10 being 'Happy' and 1 'Concerned'.

10 9 8 7 6 5 4 3 2 1

Please explain your answer

.....

.....

.....

5. Are you (tick boxes)

A landowner

Local business

Domestic customer

Elected representative (parish, district, county)

Technical stakeholder /representative of an organisation (please state)

Other

Please can you provide some information about yourself.

This will only be used to help us understand who has answered the questionnaire and better understand local feelings and will not be used for any other purpose. We will not be able to identify you using this information and we will not store this information.

What is your postcode?

(please provide the numbers in your post code such as PE33 7xx)

What is your age? (tick box)

17 and under

18-29

30-44

45-59

60+



The information you provide in your response will be processed and retained by Anglian Water and its appointed contractors until the scheme is complete. We will not use it for any other purpose.

To read Anglian Water's Customer Privacy Notice, please visit anglianwater.co.uk/about-us/legal/privacy-notice/

